

Practice Test
CompTIA 220-801 A+ Certification Domain 2- Networking
Brought to you by RMRoberts.com

This practice test is designed to help prepare you for the CompTIA A+ certification test. Domain2 Networking test your ability to install and configure network systems both wired and wireless. The network domain objectives cover 27 percent of the A+ examination. Before taking this test you should first visit the accompanying website located at www.RMRoberts.com. This second practice test consists of 27 questions. A general minimal passing score should be 19 correct or missing no more than 8. Missing more than 8 questions means you need more preparation before taking the examination.

27 percent of the total exam

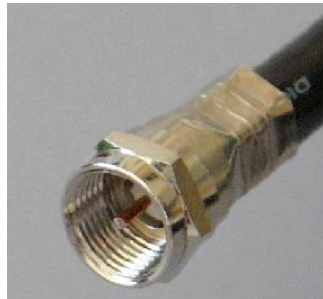
1. Which type of network cable uses an F-type connector?
 - A. STP
 - B. T567A
 - C. Fiber
 - D. Coaxial

2. Which subnet mask is associated with a class B network?
 - A. .000.000.000.255
 - B. 255.255.255.000
 - C. 255.255.000.000
 - D. 255.000.000.00

3. Which is an example of an IPv6 address?
 - A. 192.168.1.01
 - B. AF 2B 12 C2 3t4 D1
 - C. Fe80:2bc3:3c3b:4212:4f23%12
 - D. 10100011011101

4. Which type of device automatically issues IPv4 addresses?
 - A. WINS server
 - B. DHCP server
 - C. DNS server
 - D. NetBIOS server

5. Which IPv4 is an example of a APIPA address?
- A. 192.168.10.100
 - B. Fe80:2bc3:3c3b:4212:4f23%12
 - C. 169.254.12.43
 - D. 10.10.10.1
6. Which port number is associated with DNS?
- A. 21
 - B. 53
 - C. 80
 - D. 3389
7. Which port number is assigned to POP3 mail?
- A. 21
 - B. 80
 - C. 110
 - D. 443
8. What type of connector is in the exhibit?

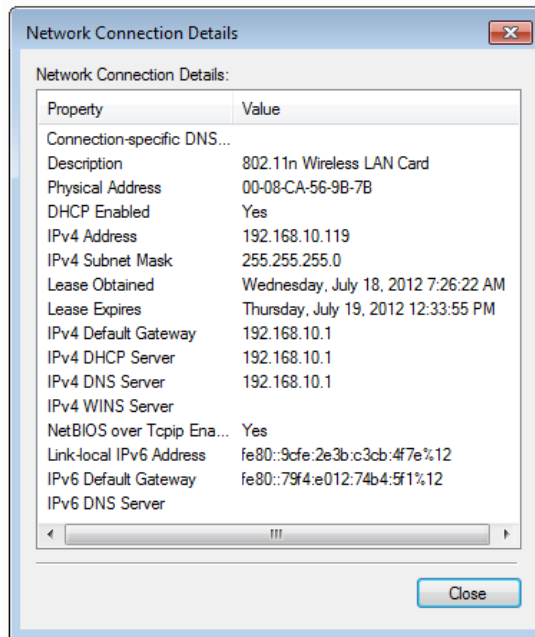


- A. STP
 - B. F-type
 - C. RJ-45
 - D. DB-232
9. Which application would most likely require QoS to function properly?
- A. Telephone modem
 - B. VoIP
 - C. Email
 - D. Instant Messaging

10. Which cable type provides no protection from EMI?

- A. STP
- B. Fiber
- C. RG-6
- D. UTP

11. Select the most accurate answer based on the information provided by the exhibit.



- A. The network connection has been disabled.
- B. The computer has been assigned a private IP address.
- C. The computer cannot access the Internet because it has no IPv4 WINS Server address assigned
- D. The IPv6 network address is corrupted.

12. A computer is not connecting to the Internet but is connecting to local network shares. You inspect a computer assigned IP address and see that it is 169.254.10.1. What is the most likely problem?

- A. The network card is defective.
- B. The WINS server is down.
- C. The DHCP server has failed.
- D. The network cable has become disconnected from the PC.

13. Which command would you use to identify a computer MAC address?
- A. Ping
 - B. Tracert
 - C. Ipconfig
 - D. Msconfig
14. What is the loopback address associated with IPv4?
- A. 192.168.0.1
 - B. 127.0.0.1
 - C. 10.0.0.1
 - D. 255.255.255.255
15. Which type of address must be manually configured?
- A. APIPA
 - B. Static
 - C. Dynamic
 - D. DHCP
16. Which protocol is designed to support network file sharing?
- A. SNMP
 - B. SMB
 - C. SSH
 - D. SFTP
17. At which two frequencies does 802.11n operate? (Select two answers.)
- A. 2.4 MHz
 - B. 2.4 GHz
 - C. 5.0 MHz
 - D. 5.0 GHz
18. Which encryption type provides the least security?
- A. WEP
 - B. WPA
 - C. WPA2
 - D. AES
19. What is the name of the technology that only lets specific wireless devices connect to a wireless access point?
- A. Channel selection
 - B. MAC filtering
 - C. Dynamic addressing
 - D. Port forwarding

20. Which protocol is used to map all local network addresses to one single Internet address?
- A. DMA
 - B. TCP
 - C. NAT
 - D. UDP
21. Which protocol or standard is designed to allow a user to connect a wireless device to a secure wireless device without the need to enter a passphrase or key? The device typically uses a push button.
- A. Mac filter
 - B. Dynamic addressing
 - C. WPS
 - D. FTP
22. Which are the two major types of ISDN service available?
- A. Static and dynamic
 - B. Fixed cost and variable
 - C. BRI and PRI
 - D. DSL and Cable
23. A home office uses a centralized network switch to connect all computers and printers using UTP cable. Which network topology would this physical arrangement most closely match?
- A. Mesh
 - B. Star
 - C. Bus
 - D. Ring
24. Which tool can be used to measure ohms?
- A. Loopback plug
 - B. Multimeter
 - C. ODM
 - D. Toner probe
25. Which device forwards network packets based upon MAC address?
- A. Router
 - B. Hub
 - C. Switch
 - D. Repeater

26. Which device does not segment a network.

- A. Gateway
- B. Router
- C. Switch
- D. Hub

27. Which network device is designed to work at higher levels of the OSI for example layer 4 to layer?

- A. Gateway
- B. Router
- C. Switch
- D. Bridge

Answers

1. Which type of network cable uses an F-type connector?
D. Coaxial
2. Which subnet mask is associated with a class B network?
C. 255.255.000.000
3. Which is an example of an IPv6 address?
C. Fe80:2bc3:3c3b:4212:4f23%12
4. Which type of device automatically issues IPv4 addresses?
B. DHCP server
5. Which IPv4 is an example of a APIPA address?
C. 169.254.12.43
6. Which port number is associated with DNS?
B. 53
7. Which port number is assigned to POP3 mail?
C. 110
8. What type of connector is in the exhibit?
B. F-type
9. Which application would most likely require need QoS to function properly?
B. VoIP
10. Which cable type provides no protection from EMI?
D. UTP
11. Select the most accurate answer based on the information provided by the exhibit
B. The computer has been assigned a private IP address.
12. A computer is not connecting to the Internet but is connecting to local network shares. You inspect a computer assigned IP address and see that it is 169.254.10.1. What is mostly the problem.
C. The DHCP server has failed.
13. Which command would you use to identify a computer MAC address?
C. Ipconfig
14. What is the loopback address associated with IPv4?
B. 127.0.0.1

15. Which type of address must be manually configured?
B. Static
16. Which protocol is designed to support network file sharing?
B. SMB
17. At which two frequencies does 802.11n operate? (Select two answers.)
B. 2.4 GHz
D. 5.0 GHz
18. Which encryption type provides the least security?
A. WEP
19. What is the name of the technology that only lets specific wireless devices connect to a wireless access point?
B. MAC filtering
20. Which protocol is used to map all local network addresses to one single Internet address?
C. NAT
21. Which protocol or standard is designed to allow a user to connect a wireless device to a secure wireless device without the need to enter a passphrase or
C. WPS
22. Which are the two major types of ISDN service available?
C. BRI and PRI
23. A home office uses a centralized network switch to connect all computers and printers using UTP cable. Which network topology would this physical arrangement most closely match?
B. Star
24. Which tool can be used to measure ohms?
B. Multimeter
25. Which device forwards network packets based upon MAC address?
C. Switch
26. Which device does not segment a network.
D. Hub
27. Which network device is designed to work at higher levels of the OSI for example layer 4 to layer?
A. Gateway